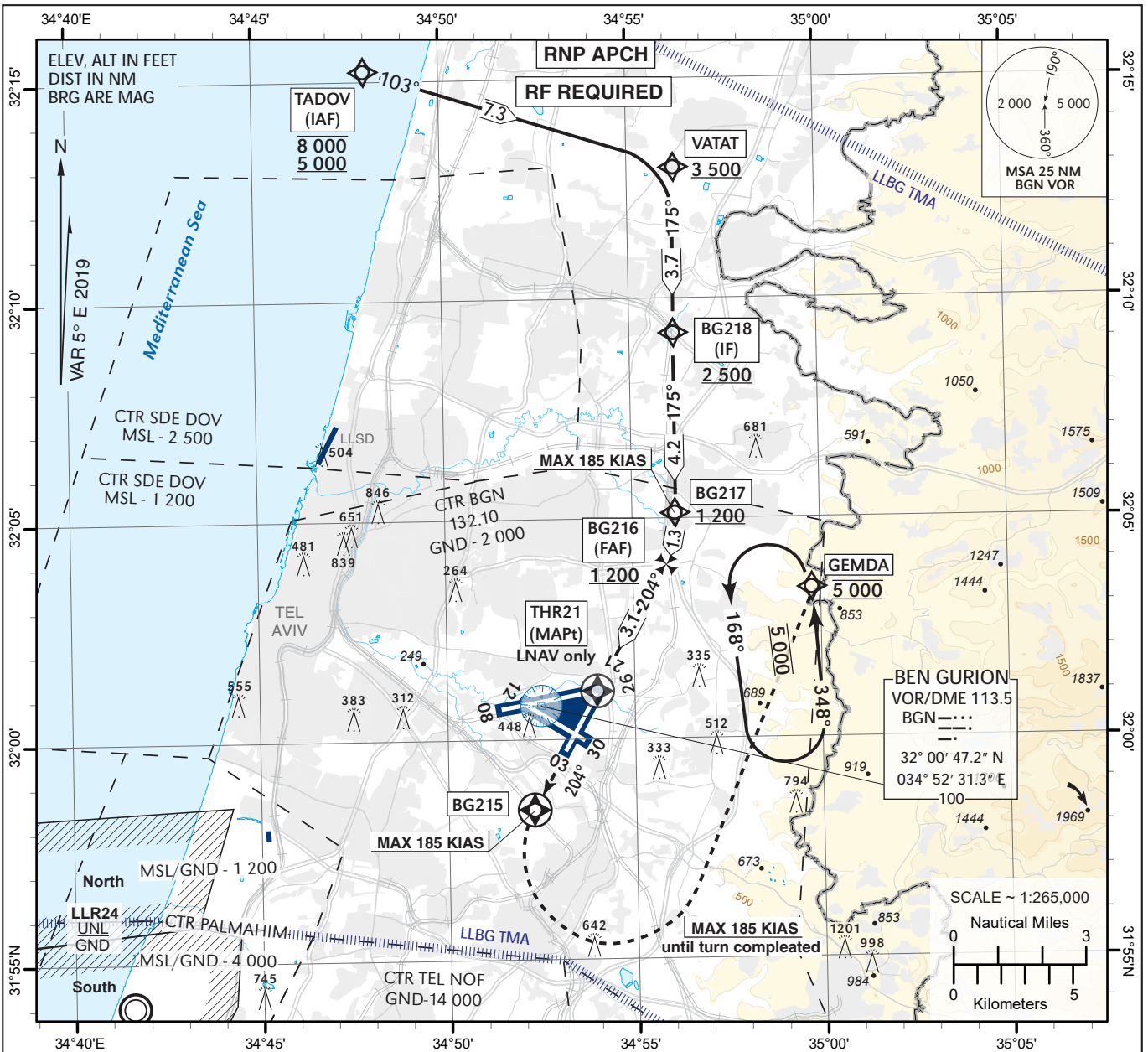


**INSTRUMENT  
APPROACH  
CHART - ICAO**

AD ELEV **134 ft**

APP 131.10  
TWR 132.10

**TEL-AVIV / BEN-GURION (LLBG)  
RNP Y RWY 21**

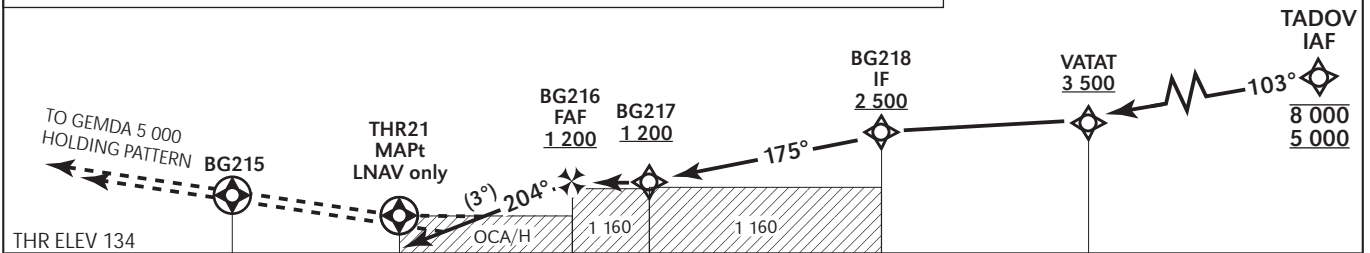


**MISSED APPROACH:**

Climbing to 5 000. Proceed on track 204° to BG215, then turn LEFT (MAX 185 KIAS) direct to GEMDA Holding waypoint to be reached at 5 000.

**NOTE:** Climb gradient of 5.0% (300/NM) due to airspace restrictions. If unable to comply utilize 2.5% and advise ATC.

NM to RWY 21	1	2	3
ALTITUDE (HGT)	500 (366)	820 (686)	1140 (1006)
TRANSITION ALT 18 000			
RDH 50FT			



OCA (OCH)		A	B	C	D
STRAIGHT IN APPROACH	LNAV	730(596)			
	LNAV/VNAV Missed APCH climb grad. 5.0%	384(250)	384(250)	390(256)	400(266)
	LNAV/VNAV Missed APCH climb grad. 2.5%	520(386)	530(396)	540(406)	550(416)
CIRCLING		N/A			

**REMARK:**  
For uncompensated Baro-VNAV system: Baro VNAV Temperature MNM - 10°C/MAX 60°C Effective VPA at 0°C is 2.8° Effective VPA at 45°C is 3.3°

<b>Ground Speed</b>	KT	80	100	120	140	160	180
<b>Rate of descent: 5.2%</b>	ft/min	424	531	637	743	849	955

LLBG - RNP Y RWY 21

Navigation Specification	Path Descriptor (Recommended)	Waypoint Identifier	Latitude Longitude	Fly-Over	Course/Track M° (T°)	Distance (NM)	Turn Direction	Altitude (ft)	Speed (Kts)	Remarks
RNAV1	IF	TADOV	32° 15' 15" N 034° 48' 00" E					-8 000 +5 000	-230	IAF
RNP APCH	TF	VATAT	32° 13' 00.0" N 034° 56' 13.0" E	-	103 (107.8)	7.3	-	+3 500	-	
RNP APCH	TF	BG218	32° 09' 15.2" N 034° 56' 11.6" E	-	175 (180.3)	3.7	-	+2 500	-	IF
RNP APCH	TF	BG217	32° 05' 03.8" N 034° 56' 10.0" E	-	175 (180.3)	4.2	-	+1 200	-185	
RNP APCH	RF Center BG999 r=2.55NM	BG216	32° 03' 50.7" N 034° 55' 47.7" E	-	-	1.3	R	+1 200	-185	BG999 32° 05' 04.6" N 034° 53' 10.0" E
RNP APCH	TF	THR21	32° 01' 05.2" N 034° 54' 00.8" E	Y	204 (208.8)	3.1	-	@184	-	
RNP APCH	TF	BG215	31° 58' 24.6" N 034° 52' 17.1" E	Y	204 (208.8)	3.0	-	-	-185	
RNP APCH	DF	GEMDA	32° 03' 26.0" N 034° 59' 48.0" E	-	-	-	L	@5 000	-185	

Holding Identification

Holding Fix	Latitude Longitude	Inbound Course/Track M° (T°)	MAX IAS (Kts)	Altitude (ft)	Outbound Time / Distance	Turn Direction
GEMDA	32° 03' 26.0" N 034° 59' 48.0" E	348 (353.0)	-	@5 000	1 Min/5.8 NM	L